

STEVENSON PATRIOTS SPONSORSHIP PACKAGES

ELITE SPONSORSHIP	PREMIER SPONSORSHIP	CHAMPION SPONSORSHIP
PANORAMA AD FAN APP BONUS	PANORAMA AD FAN APP BONUS PREGAME CINEMA AD HALFTIME CINEMA AD TIME OUT AD	BRAND WRAPPER **FALL/SPRING OR WINTER FAN APP BONUS PREGAME CINEMA AD HALFTIME CINEMA AD TIME OUT AD
\$1,500 per year	\$2,500 per year	\$3,500 per year **Only 2 Available (1 for Fall/Spring 1 for Winter)

PANORAMA



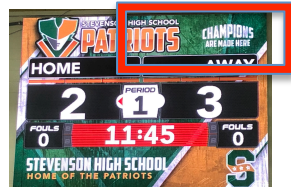
Have your ad scroll at the bottom of the scoreboard (15 sec. intervals)

CINEMA/TIME-OUT

Have a full screen ad appear on the scoreboard during the pregame, time outs and halftime

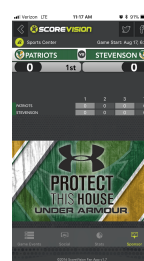


BRAND WRAPPER



Have your ad visible for the entire game (Fall/Spring or Winter)

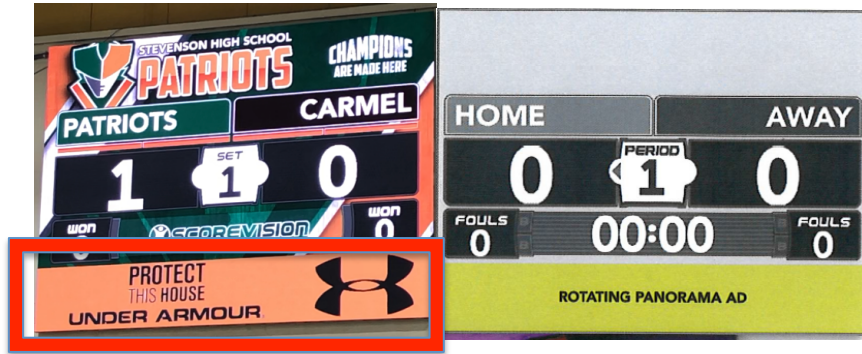
FAN APP



Have your ad displayed on our Fan App for those that can't make it out to the game!

ROTATING PANORAMA AD

The Panorama area is the persistent ad space that appears at the bottom of the screen. The ads in this space rotate in a sequence that can be defined and customized by Stevenson. These ads are continuously rotated throughout the game except during “countdowns” when the Cinema ads are displayed.



FEATURES:

duration: 15 sec. / cycle
run time: entire game
excluding countdowns
minimum visible area:
9' 5-3/8" x 1' 6"

STATIC ARTWORK SPECS:

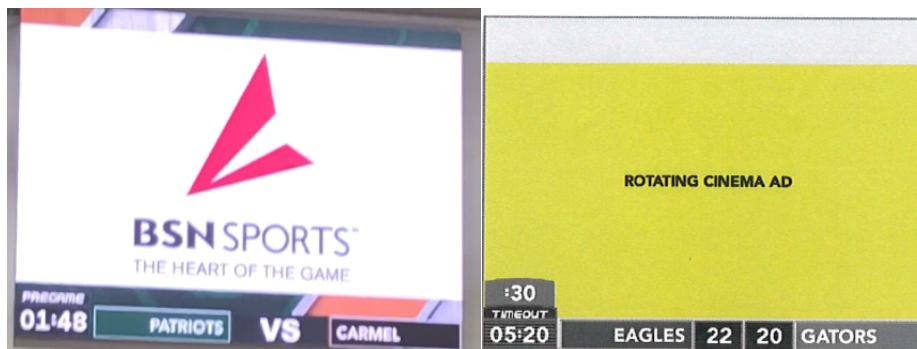
type: static
format: JPG, PNG
resolution: 1920x300px @ 72dpi
template: Photoshop CC
max size: 2MB

VIDEO ARTWORK SPECS:

type: video (no audio)
format: MOV, MP4, M4V
resolution: 1920x300px
duration: 15 seconds
max size: 20MB

ROTATING CINEMA AD

Cinema ads are premium-sized digital banners displayed in a predefined rotating sequence during COUNTDOWN PERIODS (pregame/timeouts and halftime). Cinema ads share the same aspect ratio as a standard wide-screen TV commercial and are offered in an impressive, large format in the center of the multimedia display. (Video with audio allowed during pregame)



FEATURES:

duration: 15 sec. / cycle
run time: countdowns
minimum visible area:
9' 5-3/8" x 5' 3"

STATIC ARTWORK SPECS:

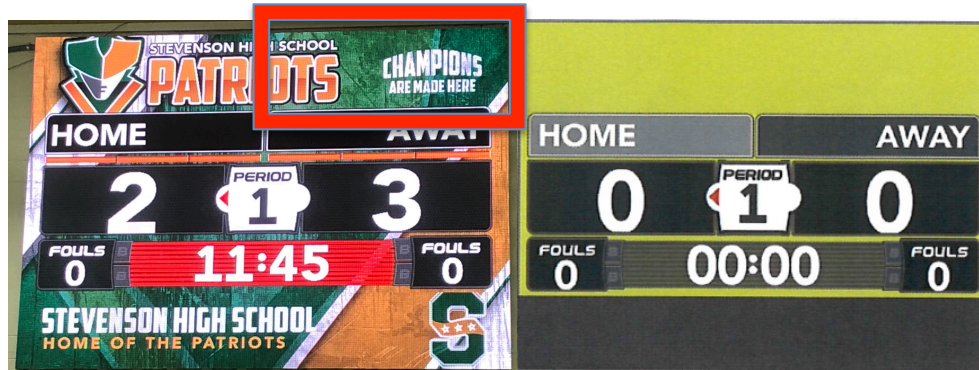
type: static
format: JPG, PNG
resolution: 1920x1080px @ 72dpi
template: Photoshop CC
max size: 2MB

VIDEO ARTWORK SPECS:

type: video (no audio)
format: MOV, MP4, M4V
resolution: 720p (1280x720px)
duration: 15 seconds
max size: 20MB

IN-GAME BRAND WRAPPER

The Brand Wrapper is the backdrop (“wallpaper”) that is overlaid by the scoreboard and panorama advertisement space. While the backdrop does show through the gaps between scoreboard elements, there is space reserved at the top of the display where branding imagery (team logos, mascots, etc.) can be displayed in order to personalize the system to your school or specific title sponsor.



FEATURES:

duration: 1 per period
run time: entire game + countdowns
minimum visible area:
9' 5-3/8" x 1' 10" (final size is based on
size of display installed)

STATIC ARTWORK SPECS:

type: static
format: JPG, PNG
resolution: dependent upon display size
template: Photoshop CC
max size: 2MB

FAN APP BONUS EXPOSURE

The Fan App was designed to allow fans to keep up with the games when they're absent by seeing live score updates, game information and sponsor advertising. The app provides the opportunity for fans to interact and engage with the game, even when they're not in attendance.

