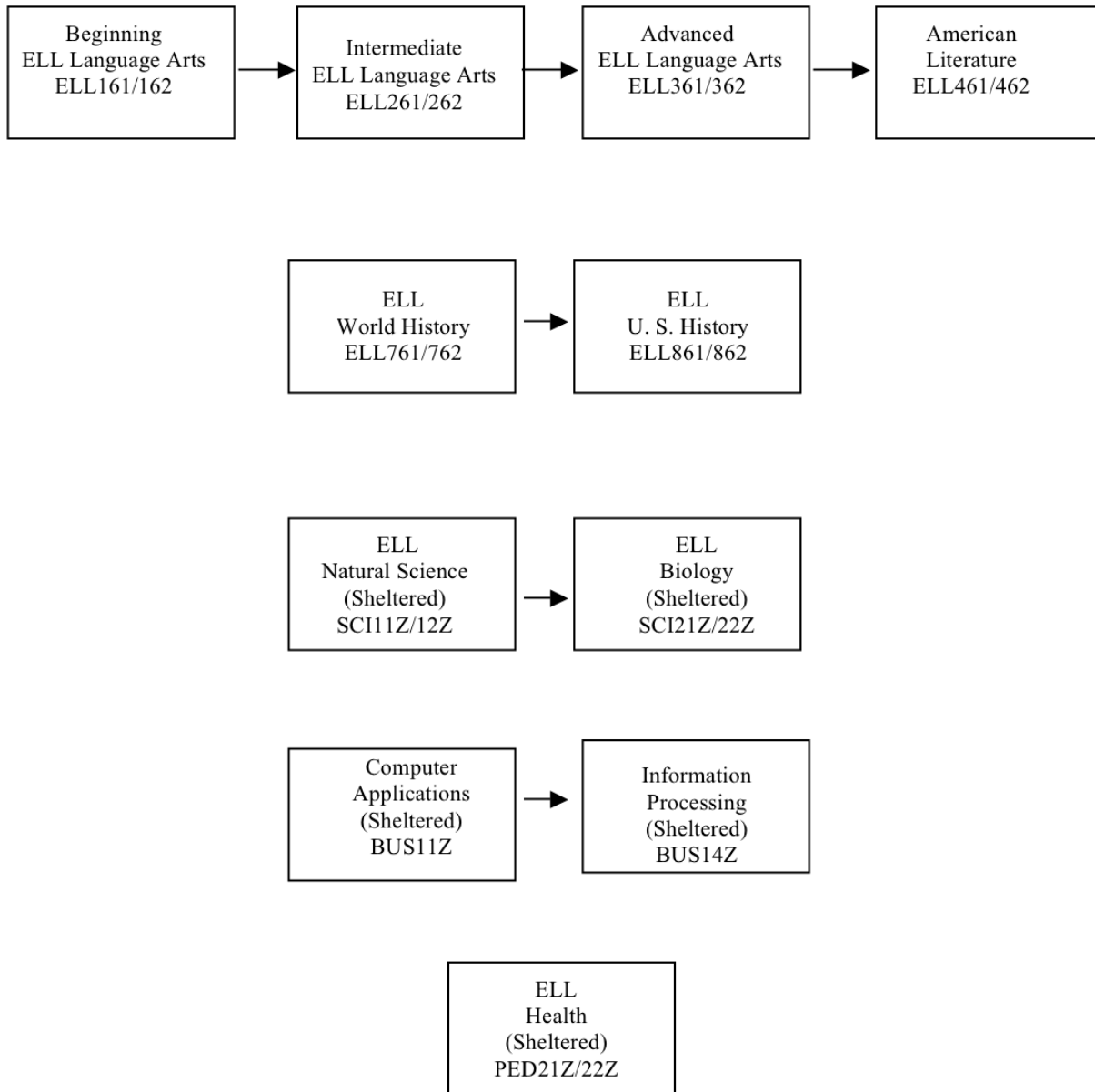


ENGLISH LANGUAGE LEARNING



All ELL classes receive full credit toward graduation requirements. Levels are based on assessment scores and class performance.

ENGLISH LANGUAGE LEARNING (ELL) DEPARTMENT



The Stevenson High School English Language Learning (ELL) Program is part of the World Languages Division. Students at Stevenson who are non-English or limited-English speakers are provided with a transitional language program. While in this program, students have the opportunity to learn English and to strengthen their reading and writing skills. The goal of the ELL program is to increase the English fluency of limited-English speakers so that they can be successful in mainstream high school classes. The ELL staff guides and gives tutorial support to its students. Appropriate placement of students in the ELL program is done through state and national testing scores, home language surveys, teacher recommendations, and the cooperative efforts of the Student Services Department and the ELL faculty in the World Languages Division.

Writing intensive courses required for graduation for the classes of 2012, 2013 2014 and 2015.

Beginning ELL Language Arts (College Prep)

ELL161-Semester 1, ELL162-Semester 2

Open to 9-10-11-12

Full Year

Prerequisite: WAPT-screener and director approval

This is a two-credit course for beginning ELL students. This course will meet two periods each day. Students will read classic and modern literature adapted for ELL students, using modified texts from a variety of sources. This course also introduces necessary vocabulary pertaining to core mainstream courses. Reading strategies and writing skills are taught and reviewed throughout the course. Students will apply their writing skills - sentence writing and paragraph writing - as they respond to reading. Grammar and spelling will be taught both in context of the text and exclusively. Students will also develop their listening and speaking skills throughout the course. Upon completion of this course, students will receive two credits in English.

Intermediate ELL Language Arts (College Prep)

ELL261-Semester 1, ELL262-Semester 2

Open to 9-10-11-12

Full Year

Prerequisite: Proficiency as demonstrated on WAPT-screener or ACCESS exam, successful completion of Beginning ELL Language Arts, teacher recommendation or director approval.

This is a two-credit course for intermediate ELL students. This course will meet two periods each day. Students will continue reading progressively higher texts in preparation for mainstream English courses. Students will continue to develop their reading and writing skills by reacting and responding to the readings examined in Intermediate ELL Language Arts. Students will learn how to compose, revise, and edit narrative, descriptive, expository, persuasive, functional and poetry assignments. Through Scholastic's READ 180 program, students will use software to practice their grammar, spelling, phonics, word fluency, vocabulary and reading comprehension skills. Special emphasis is placed on the acquisition of high-incidence academic vocabulary, modeled, and independent reading. Upon completion of this course, students will receive two credits in English.

Advanced ELL Language Arts (College Prep)

ELL361-Semester 1, ELL362-Semester 2

Open to 9-10-11-12

Full Year

Prerequisite: Proficiency as demonstrated on WAPT-screener or access exam, successful completion of Beginning ELL Language Arts, teacher recommendation or director approval.

This is a two-credit course for advanced ELL students. This course will meet two periods each day. Students will read a variety of texts, from a variety of genres. Reading strategies will continue to be developed. Students will also continue to refine their writing skills by responding to texts analytically. In addition to reading, writing and grammar skills, students will advance their listening and speaking skills by partaking in Socratic discussions, debates, and oral presentations. Upon completion of this course, students will receive two credits in English.

American Literature (College Prep)

ELL461-Semester 1, ELL462-Semester 2

Open to 10-11-12

Full Year

Prerequisite: Proficiency as demonstrated on WAPT-screener or access exam, successful completion of Beginning ELL Language Arts, teacher recommendation or director approval.

This is an American Literature class for transitional ELL students. It prepares them for the English skills, curriculum, and assessments they will find in a mainstream English classroom. This skills-based course develops students' proficiencies in the areas of reading, literary analysis, writing, grammar/usage, oral communications, and research.

ELL World History (College Prep)

ELL761-Semester 1, ELL762-Semester 2

Open to 9-10-11-12

Full Year

Prerequisite: None

This course covers ancient and classical civilizations to current events of the present time. It also covers the development of Western civilization. History and English are both emphasized by note taking, oral reports, and a research presentation. Social skills in cooperative group work and class discussion will be emphasized. This is a two-semester course that fulfills the World History requirement for graduation.

ELL U. S. History (College Prep)

ELL861-Semester 1, ELL862-Semester 2

Open to 11-12

Full Year

Prerequisite: ELL World History

This course covers the contributions made by various American cultures from the Native Americans to the present. This class helps students to gain a greater understanding of the events, philosophies, and individuals that have shaped contemporary situations. History and English are emphasized by note taking, oral reports, and a research presentation. This is a two-semester course that fulfills the American History requirement for graduation.

ELL Tutorial

ELL961-Semester 1, ELL962-Semester 2

Open to 9-10-11-12

Prerequisite: None

These are tutorial study halls in which ELL students can receive one-on-one help with their English and content area courses. ELL students are allowed to take or complete their tests with the ELL staff. In ELL tutorials, reading, writing, test preparation, and study skills are reinforced.

Computer Applications (Sheltered)**(College Prep)**

BUS11Z-Semester 1 Only

Open to 9-10-11-12

One Semester

Prerequisite: None

This course will provide students with computer skills and knowledge necessary for our technological society. Students will develop word processing and spreadsheet skills through a variety of activities (i.e. text formatting of letters, reports, research papers) related to personal, business, and educational situations. This class will be taught by a mainstream computer teacher and assisted by an ELL staff member. More personal attention will be given to each student because of a smaller class enrollment. Emphasis will be placed on vocabulary development.

Information Processing (Sheltered)

BUS14Z-Semester 2 Only

Open to 9-10-11-12

One Semester

Prerequisite: Computer Applications or proficiency test

This course will provide students an opportunity to develop information processing skills: inputting, manipulating and managing data for hard copy, networking and visual presentation. Advanced applications will integrate activities using word processing, spreadsheets, charts, graphs, mail merges, labels, outlines and styles. This class will be taught by a mainstream computer teacher and assisted by an ELL staff member. More personal attention will be given to each student because of smaller class enrollment. Emphasis will be placed on vocabulary development.

Natural Science (Sheltered)**(College Prep)**

SCI11Z-Semester 1, SCI12Z-Semester 2

Open to 9-10

Full Year

Prerequisite: None

This sequence includes one semester of introductory physical science and a second semester of earth science. First semester topics include: measurement, density, solubility, and phase changes. Second semester topics include: mineral/rock identification, plate tectonics, earthquakes, volcanoes, a bridge building project, and astronomy. Laboratory skills are emphasized. This course prepares students to continue in science courses requiring laboratory skills. This class will be taught by a mainstream science teacher and assisted by an ELL staff member. More personal attention will be given to each student because of smaller class enrollment. Emphasis will be placed on vocabulary development.

Biology (Sheltered) (College Prep)

SCI21Z-Semester 1, SCI22Z-Semester 2

Open to 10-11-12

Full Year

Prerequisite: Successful completion of Natural Science

This sequence focuses on the scientific study of life. Major biological principles include: homeostasis, evolution, ecology, continuity, energy, matter, and organization. The course is lab-oriented. Students investigate biology through inquiry and real-life applications of the concepts. This class will be taught by a mainstream biology teacher and assisted by an ELL staff member. More personal attention will be given to each student because of smaller class enrollment. Emphasis will be placed on vocabulary development.

Health (Sheltered) (College Prep)

PED21Z-Semester 1, PED22Z-Semester 2

Open to 10-11-12

One Semester

Prerequisite: None

The Stevenson High School health education program is a state-mandated, required course for graduation. It does apply toward the student's GPA. It is a one-semester course with a cumulative final exam that determines 25 percent of the overall grade. Course work covers emotional/mental health, personal health, first aid and safety, diseases, life cycles, and drugs. This class will be taught by a mainstream teacher and assisted by an ELL staff member.